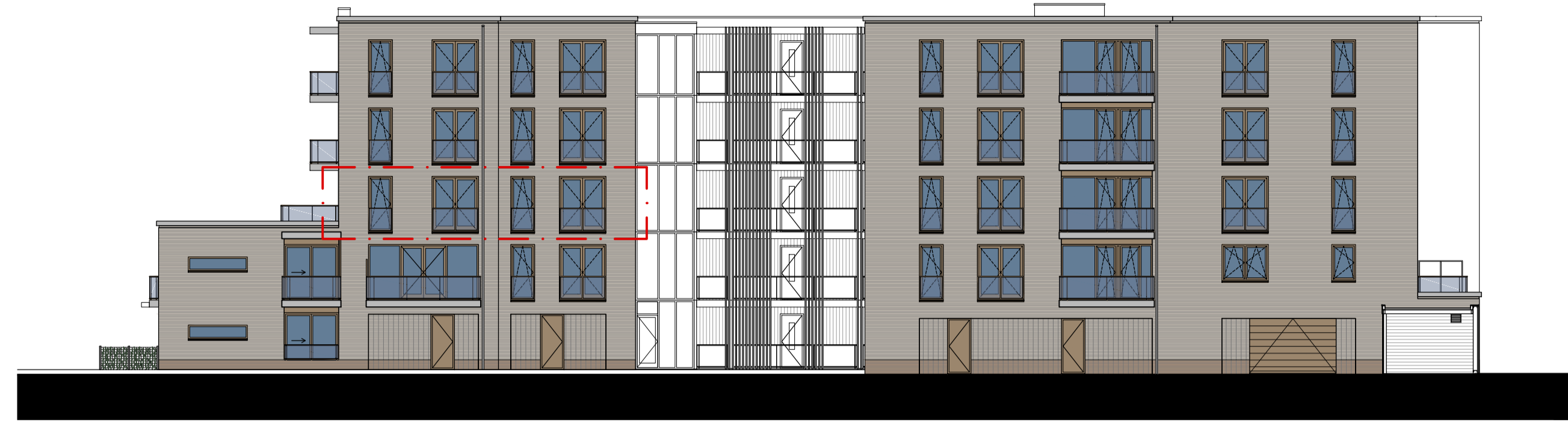




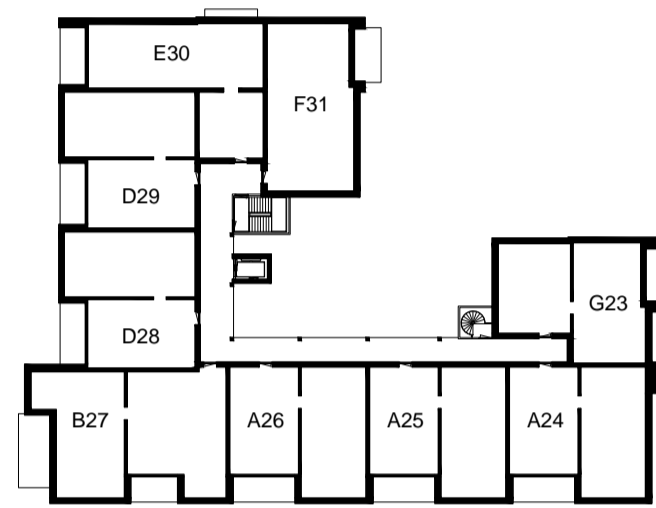
4e Verdieping



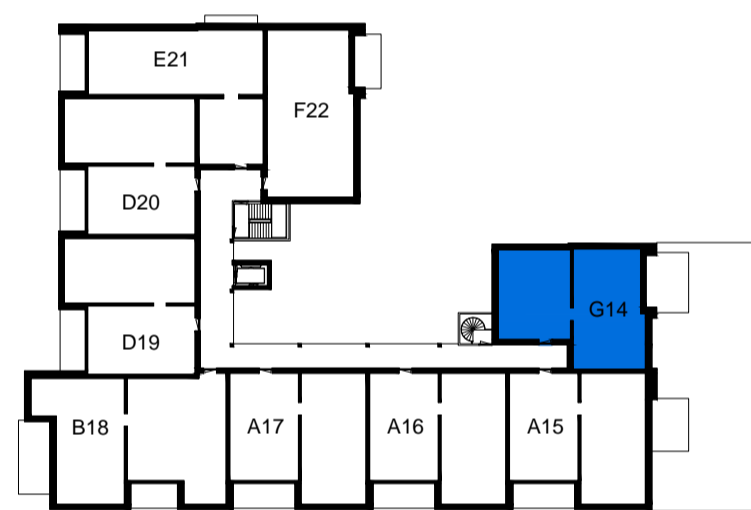
Oostgevel



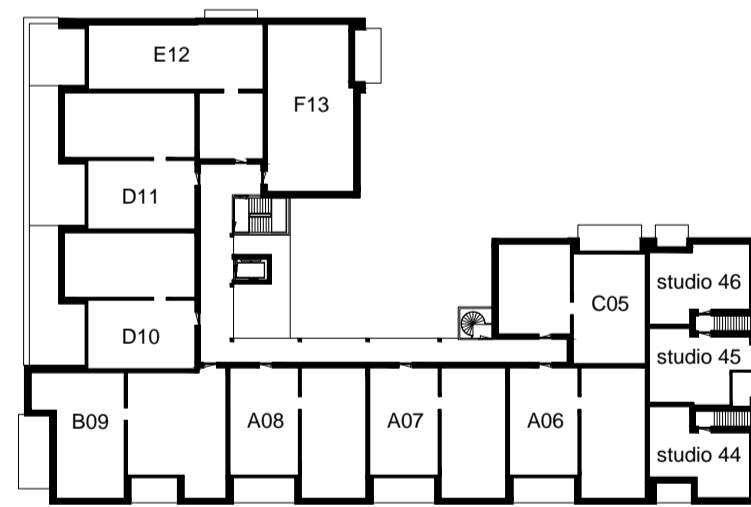
Noordgevel



3e Verdieping



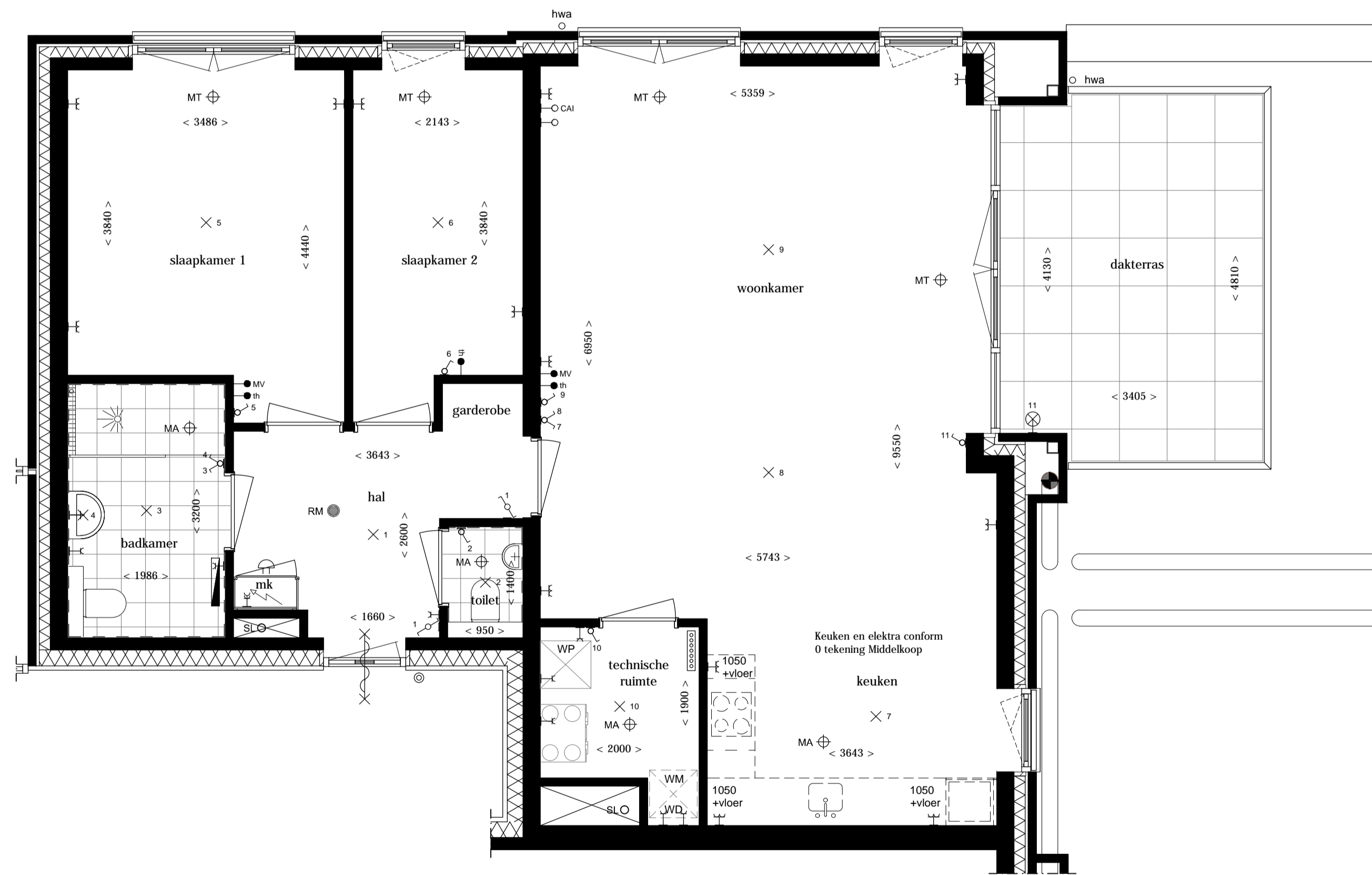
2e Verdieping



1e Verdieping



Begane grond



RENVOOI

	Wand massief		Onbedrade aansluiting
	Isolatie		Onbedrade aansluiting centrale antenne aansluiting
	Beldrukker		Mechanische ventilatie, toevoer
	Bel schel		Mechanische ventilatie, afvoer
	Roekmelder		Zelfsluitende deur, WBOBO 30 minuten
	Schakelaar		Standleiding
	Serieschakelaar		Electrische radiator
	Wisselschakelaar		Verdelers vloerverwarming
	Plafondlichtaansluitpunt		Opstelplaats WTW
	Wandlichtaansluitpunt		Opstelplaats warmtepomp
	Planfondichtaansluitpunt		Opstelplaats wasmachine en wasdroger "condensdroger"
	Wandlichtaansluitpunt		Kruipruik
	Enkele wandcontactdoos gearad (1050+P tenzij anders vermeld)		
	Dubbele wandcontactdoos gearad (1050+P tenzij anders vermeld)		
	Dubbele wandcontactdoos gearad (300+P tenzij anders vermeld)		
	Aansluitpunt thermostaat		
	Bediening mechanische ventilatie		

Indeling badkamer is indicatief.
Indeling badkamer conform 0 tekening showroom.



Aan deze artist impressie kunnen geen rechten worden ontleend

Nieuwbouw van 40 appartementen en 6 studio's, Anna van Saksenweg te Vlaardingen

Bouwnr: 2e Verdieping: G14

Plattegronden: 1:50	Formaat: A1
Gevels: 1:200	Datum: 10.09.2024
Plattegronden overzicht: 1:600	Tekeningnummer: VK-12

Realisatie:  Architect: 




Willigen Partners
 VASTGOEDEXPLOITATIE

Ontwikkeling:

VASTGOEDEXPLOITATIE



4e Verdieping



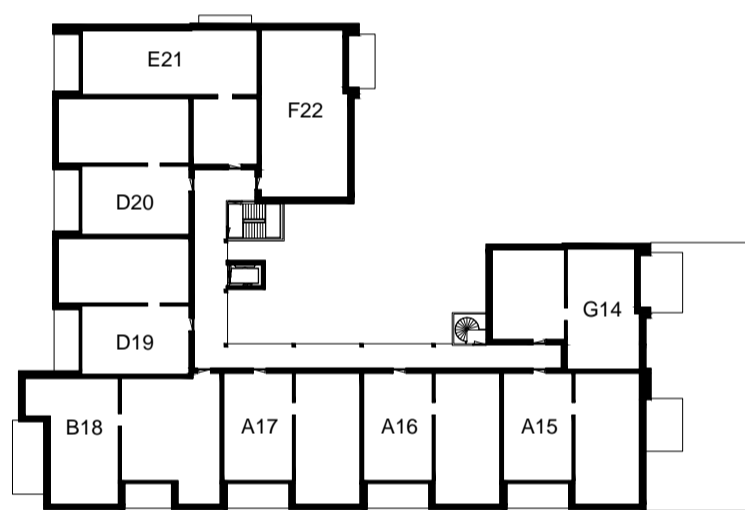
Oostgevel



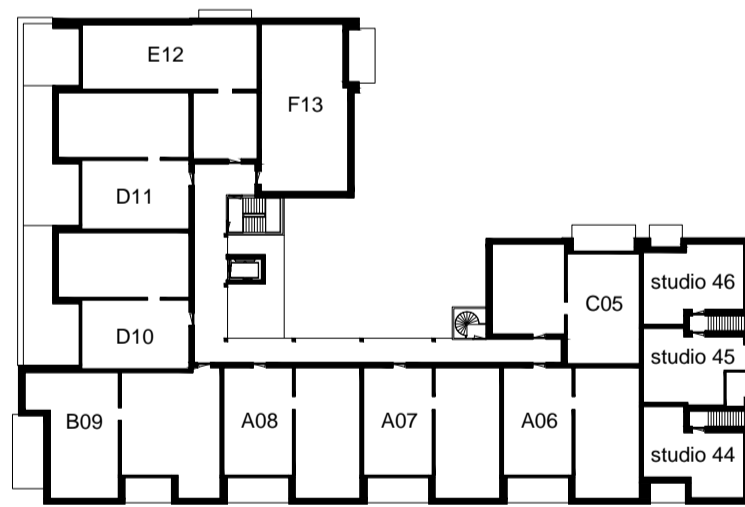
Noordgevel



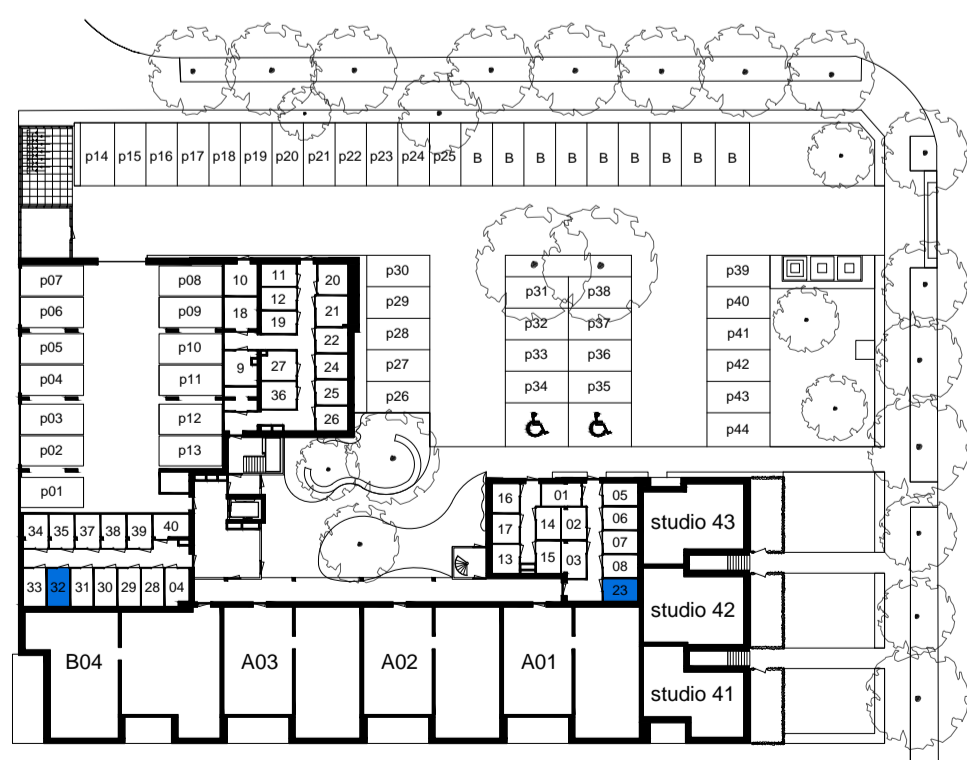
3e Verdieping



2e Verdieping




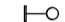



























1e Verdieping



Begane grond



RENVOOI

	Wand massief		Onbedrade aansluiting
	Isolatie		Onbedrade aansluiting centrale antenne aansluiting
	Beldrukker		Mechanische ventilatie, toevoer
	Bel schel		Mechanische ventilatie, afvoer
	Roekmelder		Zelfsluitende deur, WBOBO 30 minuten
	Schakelaar		Standleiding
	Serieschakelaar		Electrische radiator
	Wisselschakelaar		Verdeler vloerverwarming
	Planfondichtaansluitpunt		Opstelplaats WTW
	Wandlichtaansluitpunt		Opstelplaats warmtepomp
	Planfondichtaansluitpunt		Opstelplaats wasmachine en wasdroger "condensdroger"
	Wandlichtaansluitpunt		Kruipruik
	Enkele wandcontactdoos gearrd (1050+P tenzij anders vermeld)		
	Dubbele wandcontactdoos gearrd, opbouw (1050+P tenzij anders vermeld)		
	Dubbele wandcontactdoos gearrd (300+P tenzij anders vermeld)		
	Aansluitpunt thermostaat		
	Bediening mechanische ventilatie		

Indeling badkamer is indicatief.
Indeling badkamer conform 0 tekening showroom.



Aan deze artist impressie kunnen geen rechten worden ontleend

Nieuwbouw van 40 appartementen en 6 studio's, Anna van Saksenweg te Vlaardingen

Bouwnr: 3e Verdieping: G23
4e Verdieping: G32

Plattegronden: 1:50 Formaat: A1
Gevels: 1:200 Datum: 10.09.2024
Plattegronden overzicht: 1:600 Tekeningnummer: VK-13

Realisatie: Architect:




Willigen Partners
 VASTGOEDEXPLOITATIE

Ontwikkeling: